

**LEGEND:**  

—

Parcels (Clallam County GIS)

—

Existing Water Conveyance Canals (GIS 2013)

- - -

Existing Water Conveyance Pipelines (GIS 2013)

—

Proposed Pipeline

- - -

Future Pipeline (Not Part of Project)

■

Proposed Reservoir

■

Existing Structure

■

Proposed Structure

→

Flow Direction

—

Class IV Wetland

- - -

50' Wetland Buffer

- - -

Dungeness River OHWM

- - -

150' Type 1 Stream Buffer

- - -

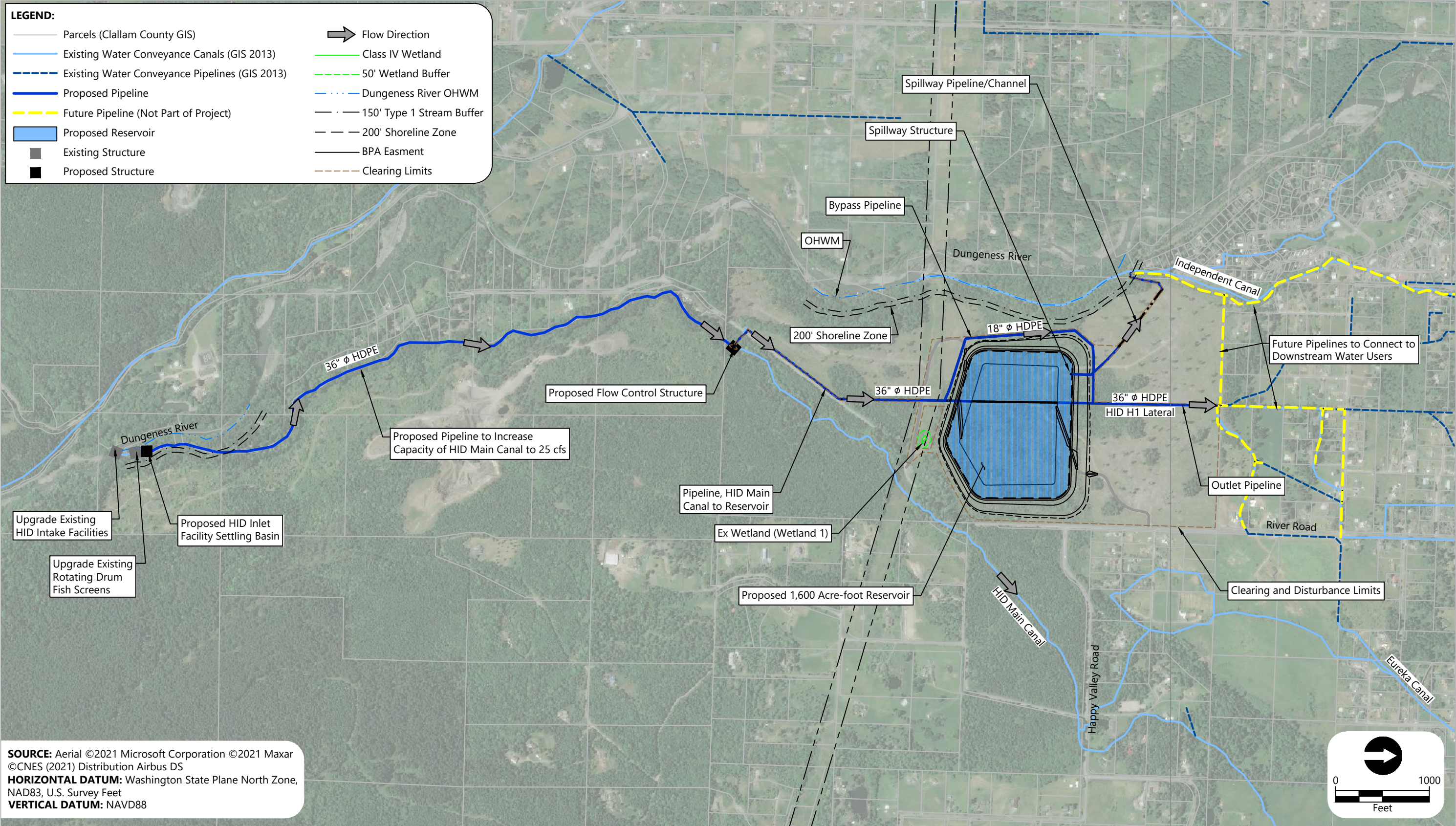
200' Shoreline Zone

- - -

BPA Easment

- - -

Clearing Limits



**SOURCE:** Aerial ©2021 Microsoft Corporation ©2021 Maxar  
 ©CNES (2021) Distribution Airbus DS  
**HORIZONTAL DATUM:** Washington State Plane North Zone,  
 NAD83, U.S. Survey Feet  
**VERTICAL DATUM:** NAVD88

Publish Date: 2022/11/07 9:42 AM | User: drice  
 Filepath: K:\Projects\1439-Clallam County\Dungeness Off-Channel Reservoir\1439-HMGP-001 (Improvement Plan).dwg Figure 1



**Figure 1**  
**Overall Improvement Plan**  
 Hazard Mitigation Grant Proposal  
 Dungeness Off-Channel Reservoir Project